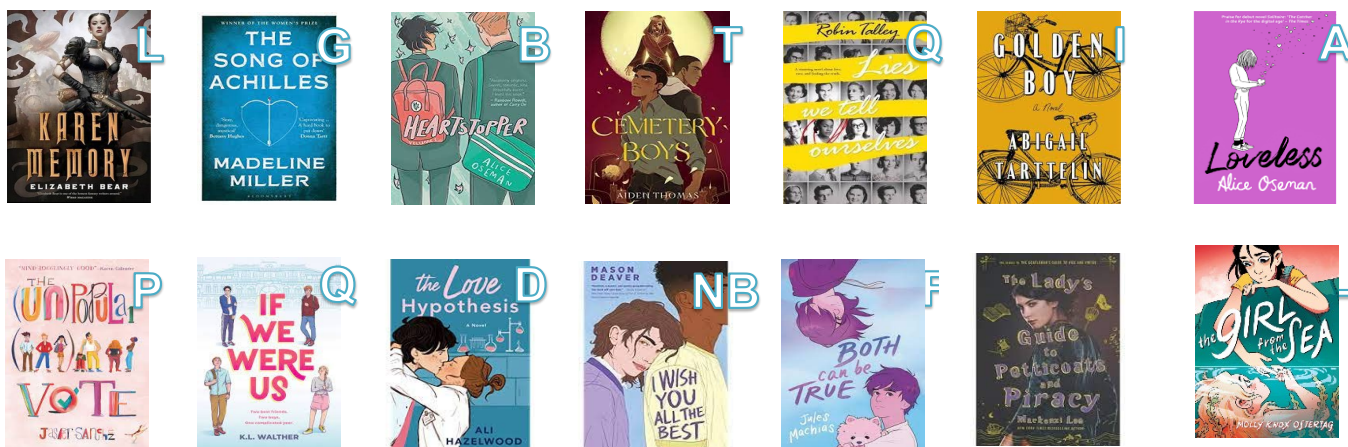


The Okeechobee County Library invites our community to celebrate Pride Month!

Established by Bill Clinton in 1999, Pride Month is an expression of acceptance, created in the hopes of building an open-minded world that prioritizes safety and love over all else. Celebrating the LGBTQ+ community and allies, Pride Month gives everyone an opportunity to recognize and honor all kinds of love and relationships while showing support by rallying with the community in honor of acceptance. Libraries champion such inclusivity, respecting the Right to Read, by providing a diverse range of choices that match every reader no matter the label or letter!

Check out the list of just a few of the books below that feature the LGBTQ+ community, in honor of Pride Month. And feel free to ask any of your Librarians for more recommendations or for more specific resources:



Karen Memory, by Elizabeth Bear
 The Song of Achilles, by Madeline Miller
 Heartstopper, by Alice Oseman
 Cemetery Boys, by Aiden Thomas
 Lies we tell ourselves, by Robin Talley
 Golden boy, by Abigail Tarttelin
 Loveless, by Alice Oseman

The Unpopular Vote, by Jasper Sanchez
 If we were us, by K.L. Walther
 I wish you all the best, by Mason Deaver
 The love hypothesis, by Ali Hazelwood
 Both can be true, by Jules Machias
 Lady's guide to Petticoats and Piracy, by Mackenzi Lee
 The Girl from the Sea by Molly Knox Ostertag

Here at the Okeechobee County Library, we offer a safe and supportive environment for all, and invite you to check out our diverse collection this June. Happy Pride Month everyone!

If you are struggling with your identity or in need of help while you travel down your own road of self-discovery, here are a few ways you can find the safety and support you deserve.

The Trevor Project
 Text: 'START' to 678-678
 Call: 1-866-488-7386

Our Village Okeechobee
 LGBTQ+ & Ally Peer Support Group
 Mondays, 4:00 - 5:00 p.m.
 205 NE 2nd St., Okeechobee, FL 34972

National Suicide Prevention Lifeline
 800-273-8255 (Available 24 hours)